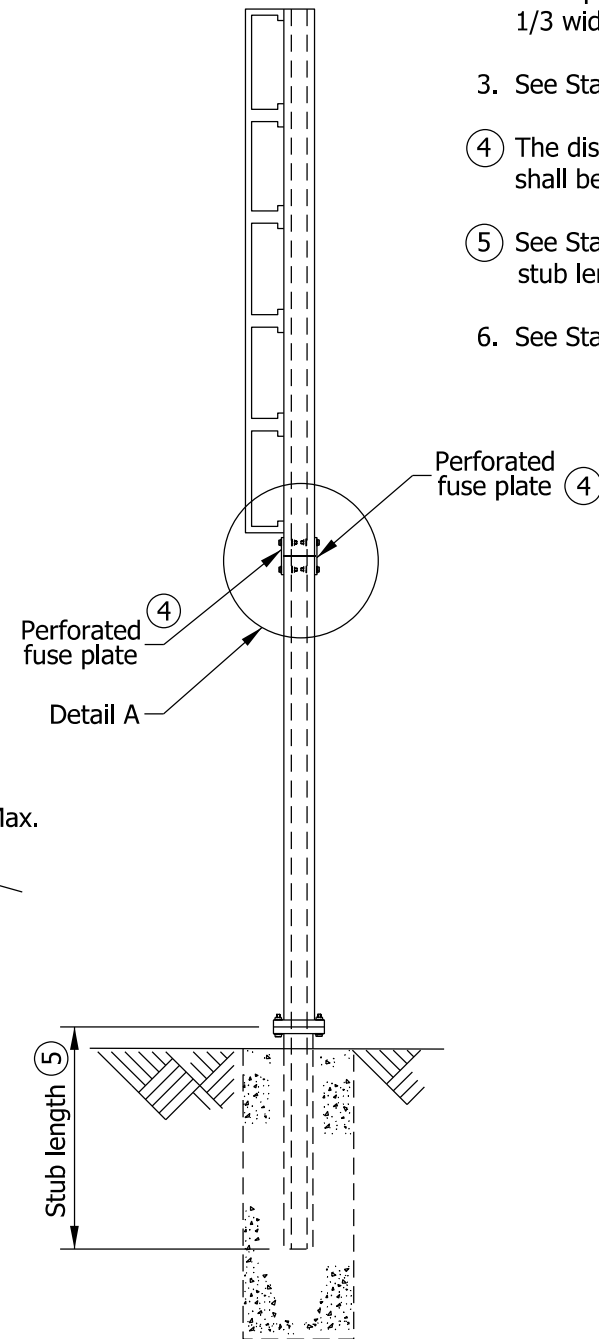
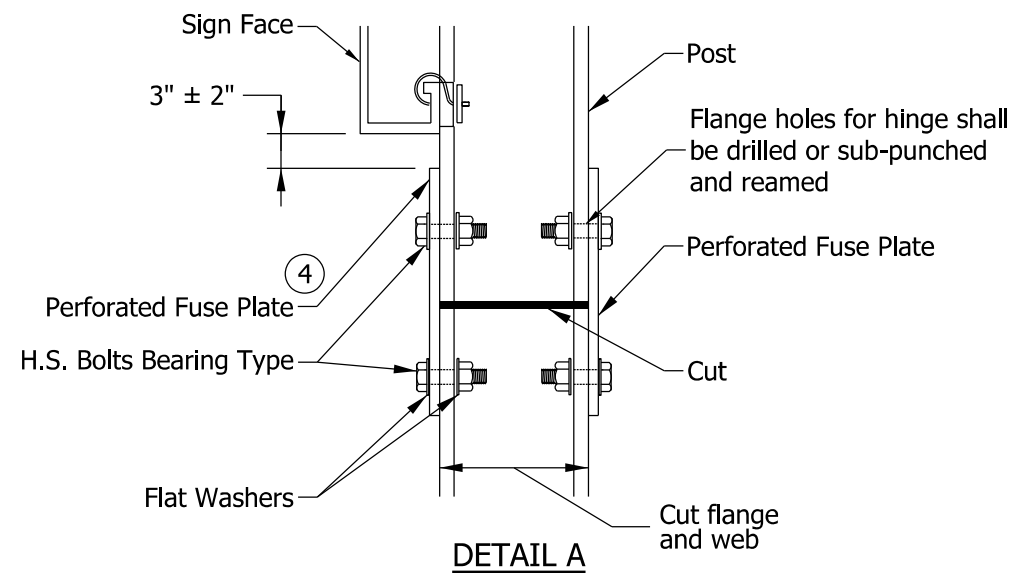


SIGN PLACEMENT
Double Support Sign (Large)



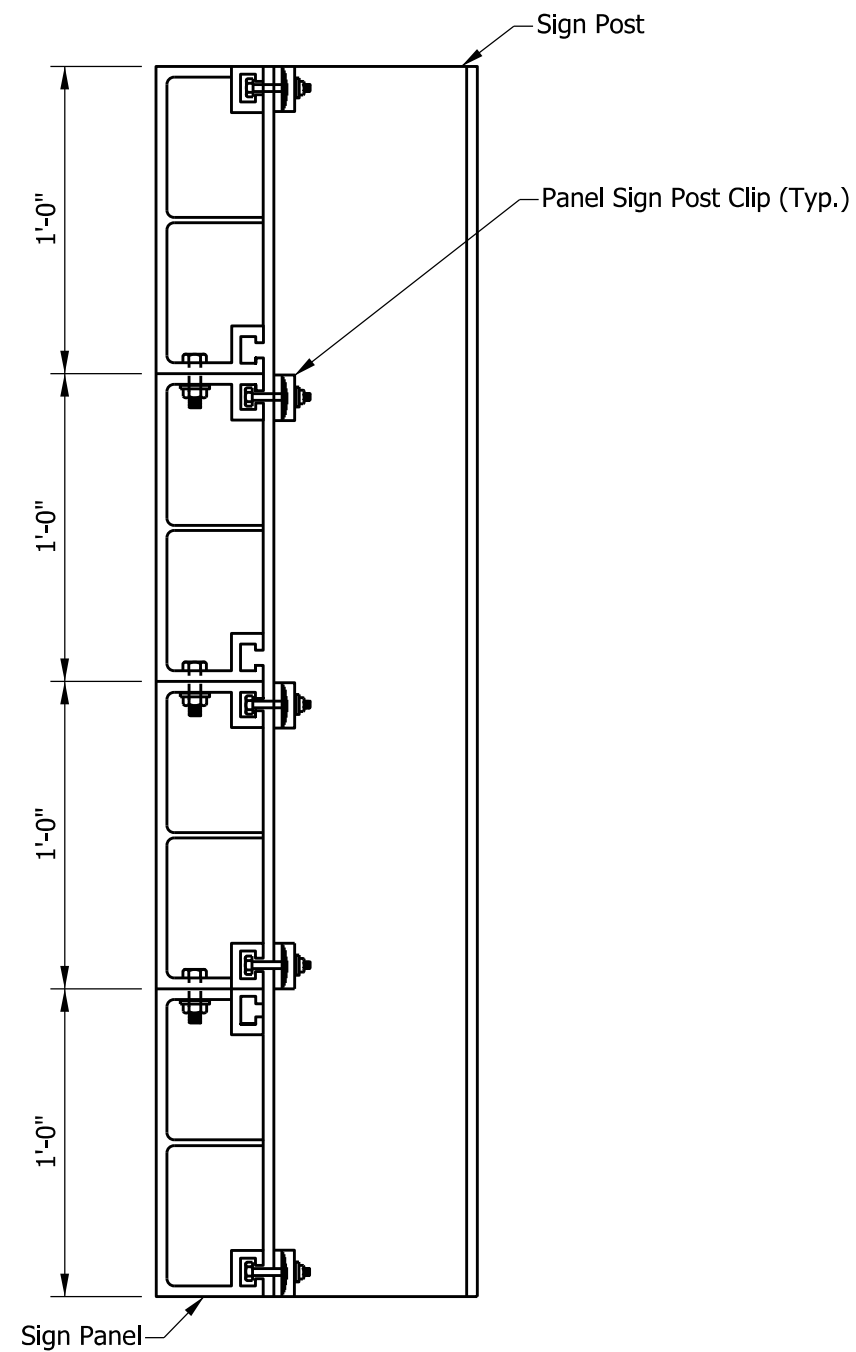
SECTION B-B

NOTES:

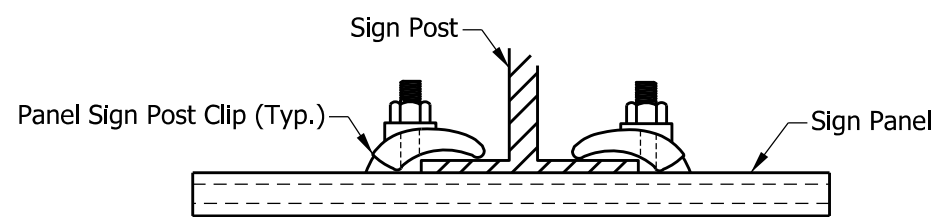
1. No more than one W10 x 19 or larger post can be used in a 7'-0" path.
No more than two W8 x 18 or smaller posts can be used in a 7'-0" path.
2. For 3 post installation, the edge of sign to post is 1/6 width of sign and 1/3 width of sign between posts.
3. See Standard Drawing E 802-SNGP-04 for base plate details.
- 4 The distance from the top of the fuse plate to the bottom of the sign shall be the same for all posts.
- 5 See Standard Drawing E 802-SNGP-07 for required stub length.
6. See Standard Drawing Sheet 2 for Section A-A.

INDIANA DEPARTMENT OF TRANSPORTATION

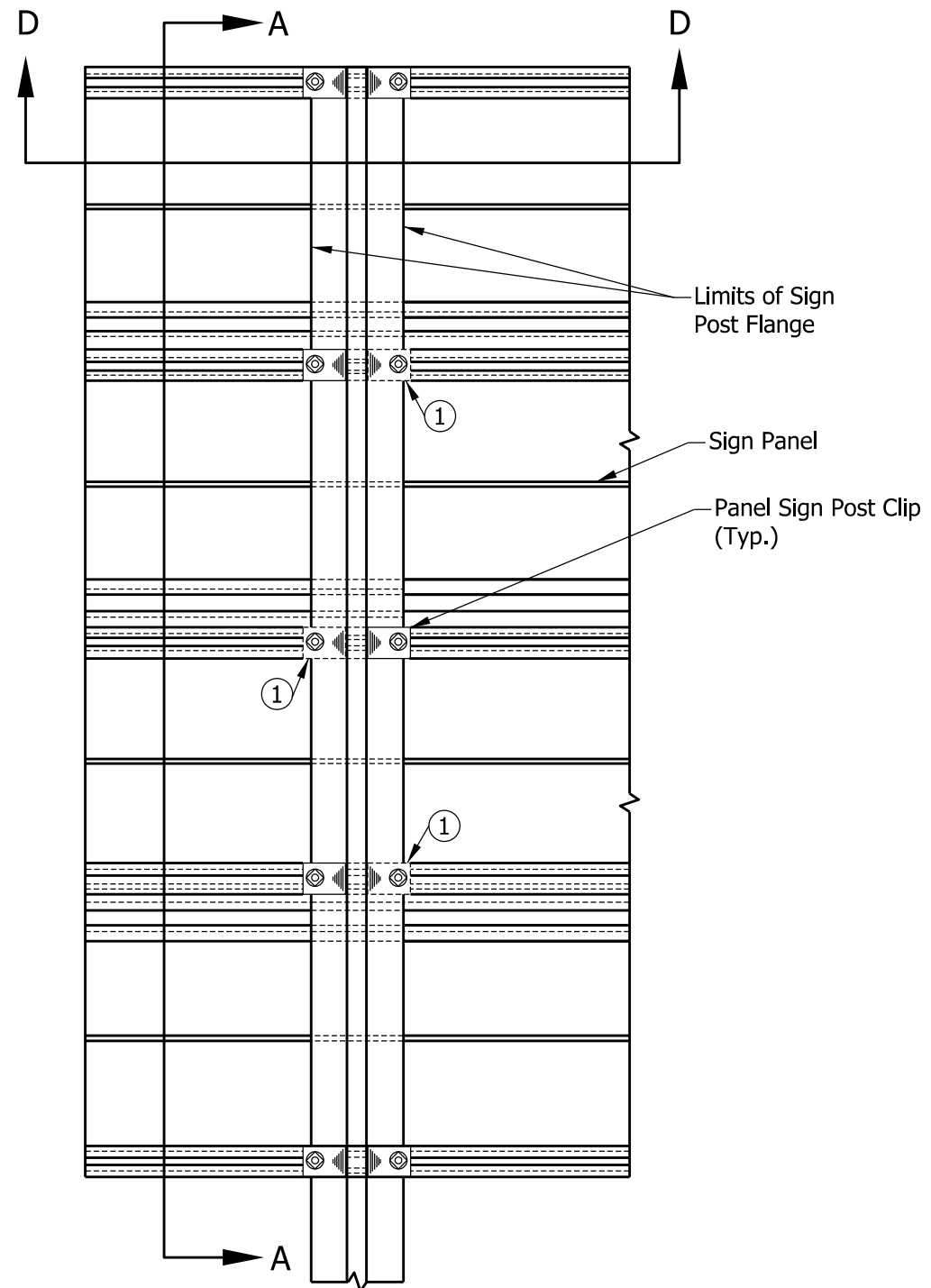
SIGN PLACEMENT



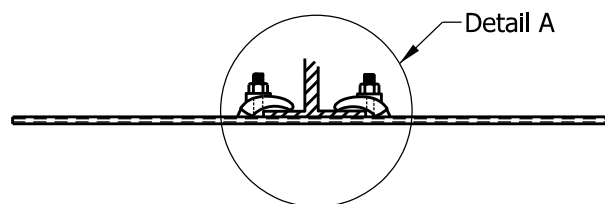
SECTION A-A



DETAIL A



ELEVATION
(View from back of sign)



SECTION D-D

NOTES:

- ① Required for sign width greater than 24'.

INDIANA DEPARTMENT OF TRANSPORTATION

SIGN PLAN DETAILS